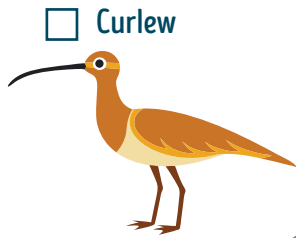


# TIDE AND SEEK CHECKLIST

Can you spot the hidden symbols on our beach signs?  
There's a different one at every bay. Tick them off as you find them!



Puffin



Curlew



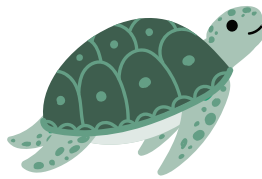
Sunglasses



Palm tree



Ice-cream



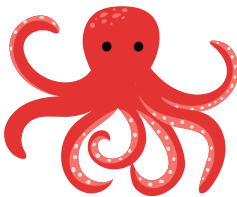
Turtle



Whelk shell



Lighthouse



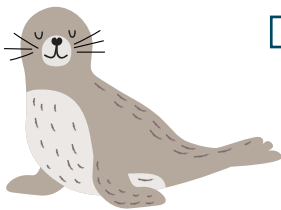
Octopus



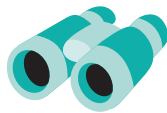
Coral



Flippers



Seal



Binoculars



Stingray



Bathing suit



Starfish



Bucket & spade



Crab



Binoculars



Jelly fish



Snorkel



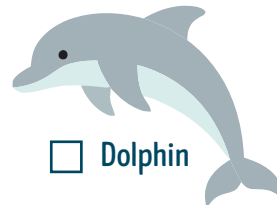
Scallop shell



Beach umbrella



Sunhat



Dolphin



Mussel shell



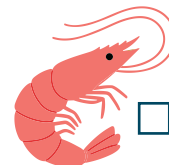
Lobster



Beach chair



Sunhat



Prawn



Surfboard



Shark fin