

Jersey Hospice Care & The National  
Trust for Jersey presents...



CELEBRATING 10 YEARS

EST. 2016

[30bays30days.org.je](http://30bays30days.org.je)

## Introduction

Thank you for signing up to the 30 Bays Summer Challenge, celebrating 10 Years in 2026!

Running from 1st July to 31st August 2026, it's still the same challenge you know and love, but with a few special updates for this significant year. Please note the provisional details for the Opening and Closing Swims below.

Opening Swim: Sunday 28th June at 10am, Greve de Lecq

Closing Swim: Sunday 30th August at 10am, Greve de Lecq

We'll update participants via email should there be any changes, so please make sure you're signed up for updates, and make sure you follow both Jersey Hospice Care and The National Trust for Jersey on social media.

Thank you to Fairway Group for being this year's sponsors. This fundraising challenge is a fantastic way to explore our beautiful island: visit your favourite beaches or discover some hidden gems, plus it's a great way to get out and about and spend time with family, friends or colleagues. And, while you enjoy your summer, we ask that you commit to raising a minimum of £50, which will go to two very worthwhile local charities:

### National Trust for Jersey

The National Trust for Jersey is celebrating its 90th Anniversary in August 2026! An independent, self-funding charity, they protect, manage and preserve our beautiful environment, rich wildlife and historic places, from clifftops to coast, woodlands to wetlands, to Jersey's unique traditions and culture.

### Jersey Hospice Care

Jersey Hospice Care is an independent charity and the island's only hospice. We are here for anyone with a life-limiting condition - and those close to them - to ensure they have equal access to the best palliative care and support, when and where they need it.

## The Challenge

The 30 Bays Summer Challenge raises vital funds which help our charities deliver much needed services. Your fundraising makes a massive difference.

'Seas' the summer! Can you tick off all 30 Bays over July and August? You can complete the challenge in a variety of ways:

- The original 30 Bays challenge - do a sea-based activity! Take a longer swim in the sea or a quick dip, or perhaps paddleboard or kayak
- Stay on land and simply connect to your coast - visit each bay, build a sandcastle, grab a photo at every location, or grab an ice cream
- Visit the bays of your choice - we understand not everyone can get to all 30. Pick your favourites and visit them 30 times instead

Also - NEW for 2026 - enjoy our mini Scavenger Hunt 'Tide & Seek' - can you spot the secret coastal symbols on each 30 Bays sign?

Be creative and enjoy getting in touch with our beautiful and precious coast. It's all about creating great memories and enjoying the summer in a fun or active way. And as always, please remember to only leave footprints after your swims, to help keep the beaches and bays looking as spectacular as ever.

On social media? Don't forget to tag us or use the hashtags #nationaltrustjersey #jerseyhospicecare #30Bays30days #30BaysSummerChallenge so we can see much you're enjoying the challenge.

**Above all, stay safe and have fun!**

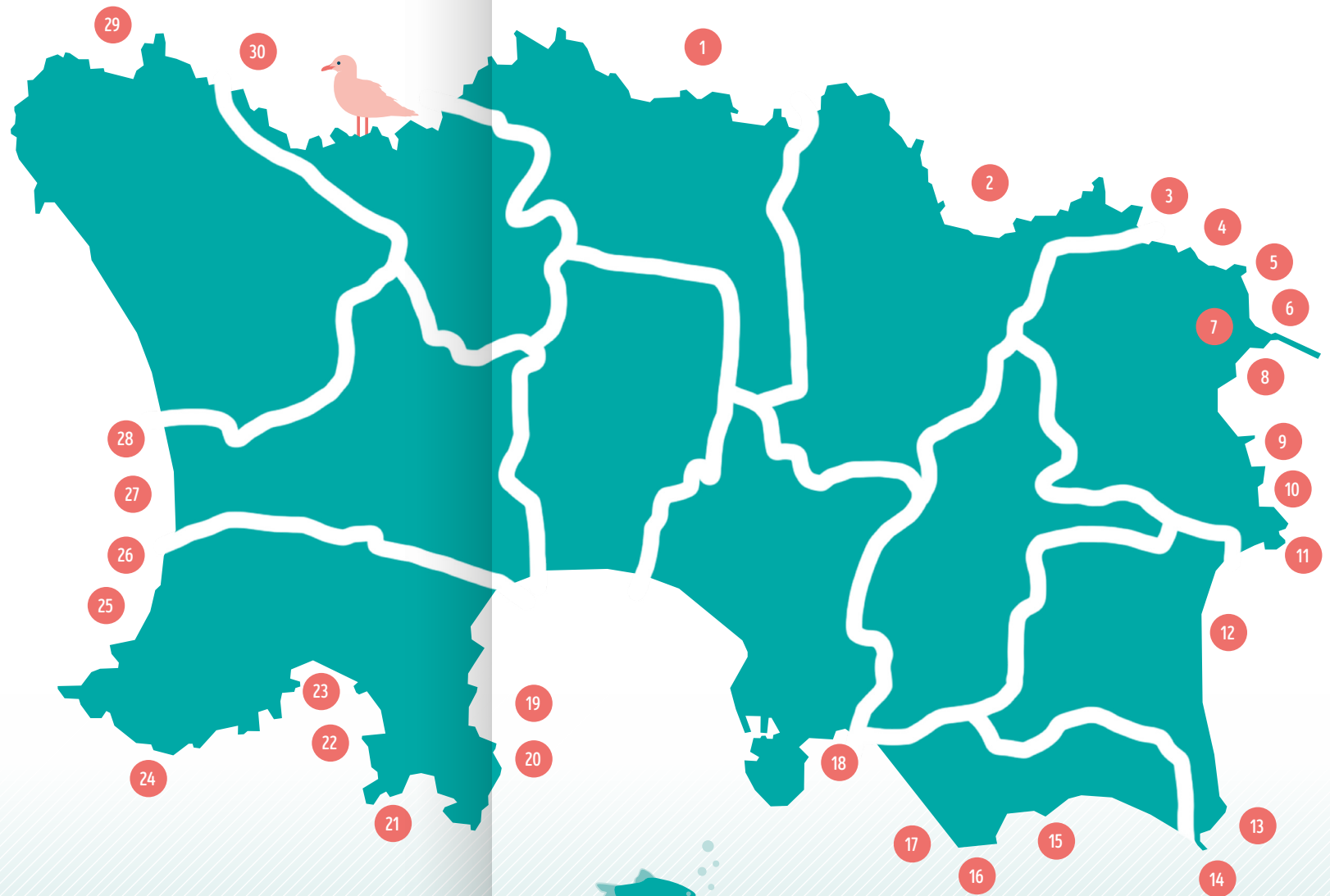


# 30 BAYS CHECKLIST

- 1. Bonne Nuit Bay
- 2. Bouley Bay
- 3. Rozel Bay
- 4. Le Saie Harbour
- 5. La Coupe
- 6. Fliquet Bay
- 7. St Catherine's Breakwater Slip
- 8. Belval Cove
- 9. Archirondel
- 10. Anne Port
- 11. Gorey Castle
- 12. Grouville Bay - Longbeach
- 13. La Rocque
- 14. Robin Bay
- 15. Le Hocq
- 16. Green Island
- 17. La Mare (Grève d'Azette)
- 18. Havre des Pas
- 19. Jenny's Slip (St Aubin)
- 20. Belcroute
- 21. Portelet Bay
- 22. Ouaisné
- 23. St Brelade's Bay
- 24. Beauport
- 25. St Ouen's Bay (La Pulente)
- 26. St Ouen's Bay (Le Brayé)
- 27. St Ouen's Bay (El Tico)
- 28. St Ouen's Bay (Watersplash)
- 29. Plémont
- 30. Grève de Lecq

## ADDITIONAL BAYS

- 31. ....
- 33. ....
- 32. ....
- 34. ....



## Anne Port

A shingle beach, which reveals fine sand in mid or low tide and gentle shelving makes for good swimming. It catches the morning and midday sun.

## Archirondel

This popular beach is pebbly at first but sandy at low tide when the water stays shallow for some way out. Archirondel loses the sun in the late afternoon. There's a car park and public toilets nearby and a popular café.

## Beauport

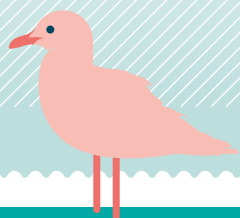
This stunning bay has a long path down from the car park, but once you've negotiated the many stones at the bottom of the path, you're rewarded with the bay's soft sand and shelter from any wind. There are no café or toilet facilities at the beach.

## Belcroute

A small cove with a shingle beach, which can be accessed from the beach at St Aubin at low tide or by dropping down a wooded lane from the Route de Noirmont. Belcroute is a quiet spot, which loses the sun just after midday.

## Belval Cove

On the way to St Catherine's, a short path from the road takes you to the cove. A large layby opposite offers plenty of parking. This is a relatively sheltered small beach, best when the tide is higher. The nearest refreshment facilities and public toilets are at St Catherine's or Archirondel.



## Bonne Nuit Bay

Bonne Nuit is the smallest of the four harbours on the north coast. There is some parking, public toilets, and a café. There's a very small sandy beach and, in the summer, fishing boats fill the harbour. Better towards higher tide.

## Bouley Bay

Bouley Bay is reached by a steep and winding road. It has a pebble beach, or you can access the sea by a slipway or the steps down from the pier. There are public toilets and a kiosk for refreshments.

## Fliquet Bay

This is a lovely tranquil spot, easily accessible by two lanes. The beach contains pebbles, sand and rock, and is sheltered from the usual westerly and south-westerly winds. There are no refreshment facilities or public toilets. Better at high tide.

## Green Island

This south-facing beach is a real sun trap with soft sand, rock climbing, and rock pools. The tide goes out a long way, so take care with the swift incoming tide and pick times close to high water to enjoy swimming or paddling. There's ample car parking, public toilets, and a restaurant and kiosk.

## Grève de Lecq

This sandy beach is one of Jersey's most picturesque and popular spots. It has plenty of parking and various restaurants, pubs, and cafes.



## Gorey Castle

If you head towards the pier wall at Gorey harbour, as you turn left there are steps down to a beautiful little cove. Parking and facilities available around Gorey harbour.

## Grouville Bay - Longbeach

With lovely soft sand around Long Beach, swimming in Grouville Bay can be done at Long Beach, off Rhona's slipway or the small beach at the mouth of the harbour. There are plenty of cafés, bars, and toilet facilities nearby. Swimmers should take note of tide times, as at low water the tide is well over a mile out from the shore, making a dip a bit of a hike!

## Havre des Pas

With various parking options nearby or walk from town, Havre des Pas is a popular sandy beach. Access the sea from the beach or use the Victorian seawater bathing pool. Please use the railings when going down the Lido steps or use the beach entrance. Plenty of refreshments nearby and changing facilities at the Lido.

## La Coupe

This is a small, mostly sandy beach, which is very sheltered from all but onshore breezes. There's a small car park but no facilities.

## La Mare (Grève d'Azette)

Mostly sandy with some rocks, the tide goes very far out all along this bay, so swimming is best on an incoming tide. There are facilities and parking at La Mare Slipway.



## La Rocque

If the tide is in, you can swim from the sandy beach. Once the tide is out, walk along the pier to take your dip. There's a kiosk and public toilets.

## Le Hocq

This spot has much to offer with its small sandy beach, plenty of parking, and public toilets by the Parish Hall. There's also the pub nearby as well as a refreshment kiosk at the top of the slipway. Be careful of the tides here.

## Le Saie Harbour

This is a lovely tranquil spot, despite limited parking and no cafes or public toilets. The beach is full of coloured shells, with sandy bits emerging at low water.

## Ouaisné

Ouaisné has much to offer - a big car park with public toilets, a refreshment kiosk, and a sandy beach, with a popular pub nearby.

## Plémont

Plémont is often described as one of the most beautiful bays in Jersey. Most parking is on the cliff top with steps down to the bay. This sandy beach offers safe bathing and surfing, rock pools and caves, and a popular café. There's a bridge to access the beach.

## Portelet Bay

This is a fine sandy bay, worth the steep climb down. The beach is completely covered at high tide, so lower and mid tide may be most optimal. There's a popular pizza restaurant at the beach.



## Robin Bay

This is a lovely little sheltered beach on the other side of La Rocque pier - a favourite for locals.

## Rozel Bay

Rozel is more of a fishing harbour than a place to swim, so wait for a higher tide. But at low tide, there's a small stretch of golden sand that's safe for children to play on. There's a popular refreshment kiosk, a tea-room, plus parking and other facilities.

## Jenny's Slip (St Aubin)

The slip in front of St Aubin's yacht club will be formally named as Jenny's Slip, to commemorate the life of Jennifer Ellenger, a very well-known and much loved figure in the Jersey community and a founder of the sea swimming group The Beaux & Bluebelles. Lots of parking and restaurants around St Aubin.

## St Brelade's Bay

St Brelade's Bay is perhaps the most famous beach in Jersey. As well as a long sandy beach, there's a host of cafés, restaurants and hotels along the front, as well as public toilets and parking. You can also hire paddleboards here.

## St Catherine's Breakwater slip

You can enjoy a good swim at any tide, with easy access from the slipway by the breakwater. There's a very popular café, plus toilets and plenty of parking.



## St Ouen's Bay (La Pulente)

La Pulente is situated at the beginning of the Bay and has plenty of parking on the opposite side of the road. There are various facilities along St Ouen's Bay.

## St Ouen's Bay (Le Braye)

Le Braye is an extremely popular beach - soft sand, lifeguarded swimming, a large carpark, public toilets, and a popular restaurant and kiosk.

## St Ouen's Bay (El Tico)

St Ouen's Bay is a natural playground for surfers, so swimmers should take care in the strong currents and stick to the flagged zones wherever possible. The beach is patrolled by RNLI lifeguards during the season. This part of the bay has El Tico café and toilets, as well as a surf shop.

## St Ouen's Bay (Watersplash)

A key surf hub, swimmers should take care in the strong currents and stick to the flagged zones. The beach is patrolled by RNLI lifeguards during the season. There are various parking and refreshment options along the bay, including the Watersplash Beach Bar & Diner.

Please make sure you do your own full research about each beach, including the weather, wind and waves and especially tide times. When it comes to the water, if in doubt, stay out or stay in lifeguarded areas.

With many thanks to the RNLI and all of Jersey's lifeguards.





Support our beautiful coastline, make amazing memories, and of course, **Thank You** for helping raise much needed funds for two amazing charities. *So go on...*



# 'SEAS' THE SUMMER



Sponsored by



**FAIRWAY**

Supported by

**pollingshed**

[www.30bays30days.org.je](http://www.30bays30days.org.je)



**Jersey Hospice Care**



**National Trust Jersey**

Patron: HM King Charles III